

SOFTWARE OVERVIEW

Quintron's next generation AccessNsite software combines all related security systems under one common platform. . .

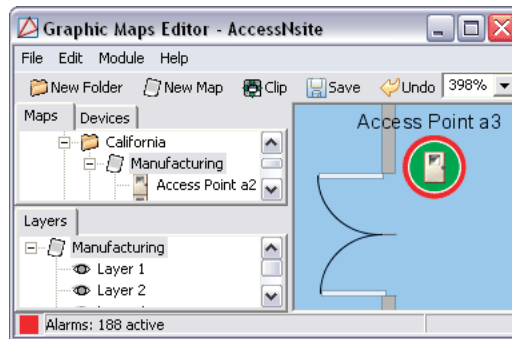
- Database and hardware independent; mix and match hardware and databases for a customized solution
- Provides a powerful security system with an intuitive user interface, alarm graphics, intrusion detection and flexible audit reporting
- Modular, object-oriented design, providing unlimited system scalability, flexibility, and reliability. . . from control of several doors to many sites worldwide, in real-time, connected by a network. . . enabling one badge, one face, or one fingerprint worldwide

Alarm Graphics Features

- Drill down map to map linkage with alarm status shown at all levels
- Supported file formats: ACAD, Visio, BMP, WMF, GIF, JPG, etc.
- Vector-based graphical maps and device icons which allow for enhanced zooming and scaling features
- Devices plotted using drag-and-drop from hardware hierarchical tree
- Multiple viewable user defined layers of different alarm types
- Devices controlled directly by device icons on the map
- Real-time status of alarms and devices displayed

Site Maps

- Unlimited graphical maps with zoom, crop capability



Fast alarm response. Click the mouse once to acknowledge the alarm, obtain instructions and graphical location. Alarms sorted and queued by priority.

Personnel Data Entry and Reporting Features



Simplified personnel data entry, capture, retrieval and reporting.

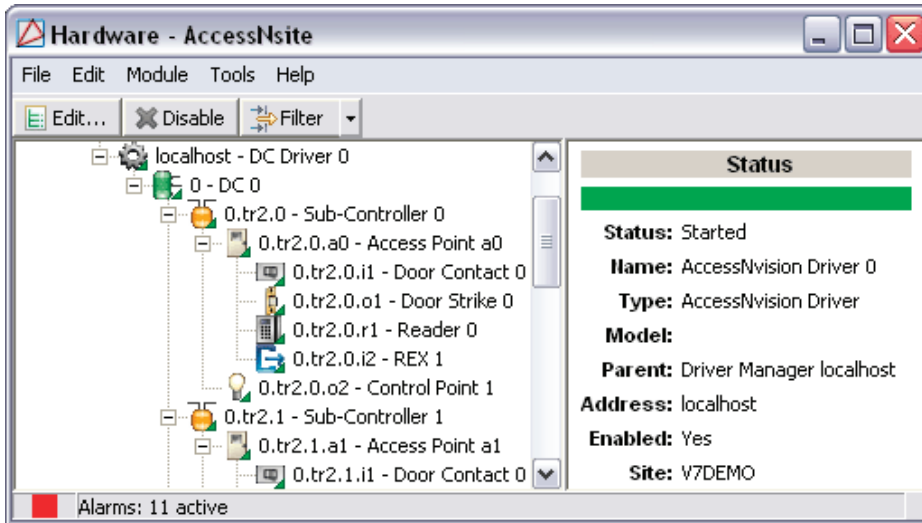
- Data entry is simple and efficient
- Customizable fields
- Personnel specific events
- Reports easily created and viewed within the application. Save reports and export to PDF, HTML, XLS, CSV, and XML

AccessNsite Features

- Open Architecture
- Scalable and Flexible
- Efficient and Cost-effective
- Network and Serial Controllers
- Database-Independent
- Hardware-Independent
- Unlimited Badgeholders
- Unlimited Access Control Devices
- Configurable Access Levels
- Hardware Time Schedules
- Customizable Holidays
- Global Anti-passback
- Integrate Any Access Technology
- Single, Dual, Multi-Technology Cards
- Magnetic Stripe, Wiegand, Proximity, Smart Card, Biometrics
- Easy-to-Use Interface and Application
- Local or Centralized Security Control
- Integrated IDS
- Multiple Client Workstations
- Encrypted Communication
- Event Photo Management

SOFTWARE OVERVIEW (cont.)

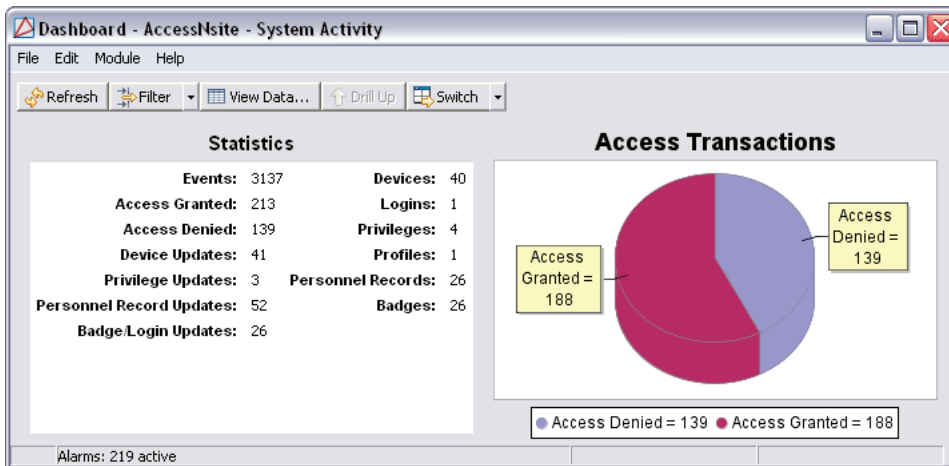
Access Control Hardware Tree



Devices may be configured and controlled with the AccessNsite hierarchical tree.

- Hardware definition in an intuitive, hierarchical tree
- Real-time hardware status
- Real-time events and alarms
- User-defined actions based upon events within the system

System Monitoring Tools



Monitor system activity, alarms, and safety reports in the AccessNsite Dashboard Module.

- Built-in system monitoring tools allow operators to view the real-time events occurring in the system
- Drill down actions allow operators to get specific information from charts and graphs

Optional Components

- Powerful Badging Module
- Digital Video Recorder Module
- IP and Analog Camera Manager Module
- C4 Voice Command & Control Module
- Multi-site Enterprise Data Sharing Middleware Module
- Officer Post Lobby & Turnstile Module
- Automated Badging Kiosk & Reception Module
- Visitor Management Module
- Certified Developer API Module
- Biometric Management Module
- Badge Designer Module

Additional Features

- Developed for all Windows™ and Linux operating systems, supporting SQL Server, Oracle, MySQL, embedded database, and more